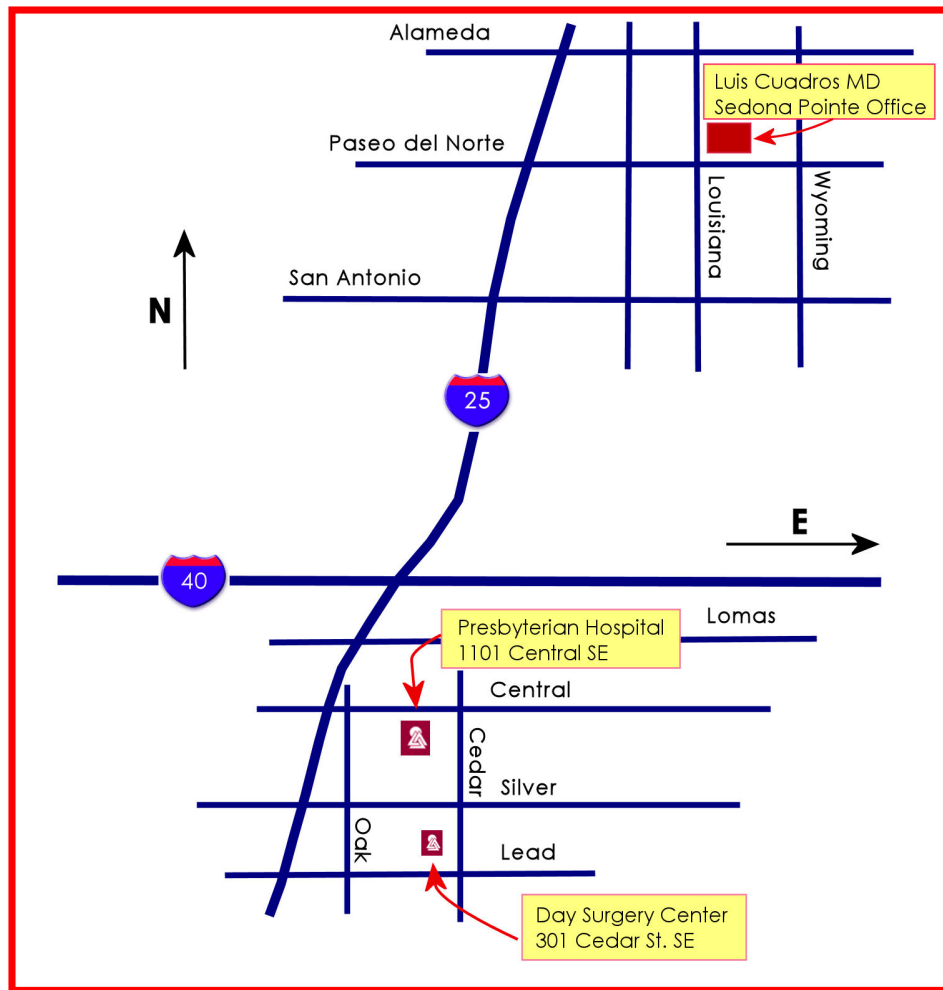


Directions to Presbyterian Hospital

Presbyterian Hospital is located approximately 8.5 miles from our office
Take Interstate 25 to Central Avenue exit



Presbyterian Hospital
Main Operating Room
1100 Central Ave SE, 87106
(505) 841-1234

Presbyterian Day Surgery Center
301 Cedar St. SE
NE corner of Cedar and Silver
(505) 841-1012